

“We are a welcoming, active and business-friendly rural foothill community built on California’s rich gold rush history”

City Manager’s Report
April 25, 2023 City Council Meeting
Prepared By: Pierre Rivas, Development Services Director



Item#: 12.2

Subject: Review status report on the FY22-23 Municipal Service Review and Sphere of Influence update (MSR/SOI) being conducted by El Dorado Local Agency Formation Commission (LAFCo) for the City of Placerville and provide direction to staff.

Recommendation: Receive and file report and provide staff with any comments or direction.

Purpose: The purpose of this report is to inform the City Council of the status on LAFCo’s review and update of the *City of Placerville Municipal Services Review and Sphere of Influence Update* adopted August 23, 2017.

Strategic Plan Strategy: Strategy – Maintain and Update Planning Documents

Background: State Law (SB 938, Cortese-Knox-Hertzberg Local Government Reorganization Act of 2000, Government Code Sections 56000 et seq.) requires El Dorado Local Agency Formation Commission (LAFCo) conduct sphere of influence updates (SOIs) for all agencies under its jurisdiction by January 1, 2008 and every five years after that. State Law also requires the completion of municipal service review (MSRs) prior to determining the City’s SOI.

This update involves the completion of a review and update of the *City of Placerville Municipal Services Review and Sphere of Influence Update* last adopted August 23, 2017. LAFCo will first complete a comprehensive review and update of the City’s MSR involving a review of the municipal services the City provides including road maintenance, law enforcement, parks and recreation services, lighting and landscaping, drainage and flood control, water distribution, wastewater, fire suppression, and including an evaluation of the City’s capital investment and improvement programs, and finances. Following completion of the MSR update, LAFCo will conduct a SOI update taking into consideration the City’s growth rate and its ability to adequately serve those areas outside the City’s corporate limits.

Prior to updating the City’s SOI, LAFCo will first analyze how well the City is currently providing services and then extrapolate where the City is anticipated to grow in the future. The MSR is designed to examine all facets of the City municipal responsibilities from infrastructure needs and deficiencies to its management practices and financing. The MSR data is used to evaluate proposals that may affect City expansions, or annexations over the next 10 to 20 years. The SOI serves as a “planning boundary” outside of the City’s service area or corporate limits. It designates the City’s probable future boundary and service area. Factors considered in an SOI

update include current and future land use, the current and future need for service and the City's service capacity.

LAFCo has the express purpose to adopt spheres of influence boundaries that discourage urban sprawl and encourage orderly formation and development of local agencies. Goal A of the Land Use Element of the City General Plan contains specific policies "to provide for orderly development within well-defined urban boundaries."

Discussion: LAFCo held a kick-off meeting (virtual) on December 14, 2022 with City staff and representatives of Planwest Partners Inc., the consulting firm conducting the MSR/SOI update for LAFCo. City Departments were provided "Municipal Services Review Questionnaires" which were completed and provided to Planwest. Copies of those completed questionnaires are provided in Attachment A.

The draft MSR/SOI update is scheduled to be presented to LAFCo at their May 24, 2023 meeting at which time the draft becomes a public document and is available for review and comment. The final document is tentatively scheduled for adoption on June 28, 2023. Also attached are two areas the City seeks to expand its sphere of influence. These include the Smith Flat Area SOI Expansion area (Attachment B) and the Missouri Flat Road SOI Expansion area (Attachment C).

The City and LAFCo staff will have the opportunity to review an administrative draft prior to the draft being presented to LAFCo by Planwest.

Options:

1. Make no changes to the staff proposals.
2. Direct staff to modify their recommendations to LAFCO and resubmit them.
3. Provide other direction to staff.

Cost: Minor expense of staff time providing necessary information to Planwest Partners to facilitate the MSR/SOI update process.

Budget Impact: None.



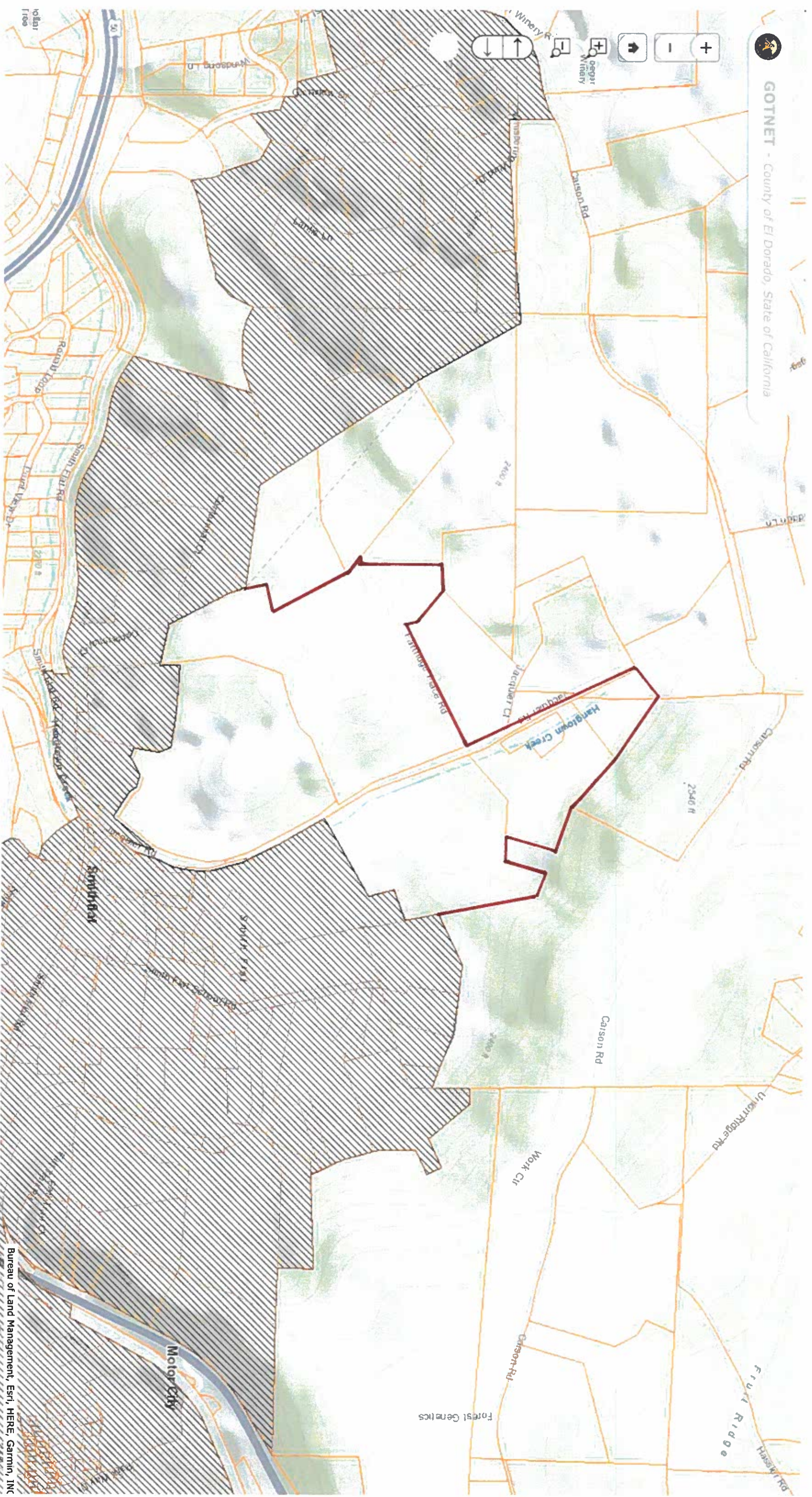
M. Cleve Morris, City Manager



Pierre Rivas, Development Services Director

Attachments:

- A. Completed Municipal Services Review Questionnaires
- B. Draft Smith Flat Area SOI Expansion
- C. Draft Missouri Flat Road SOI Expansion
- D. Goal A Policies, Land Use Element, City General Plan

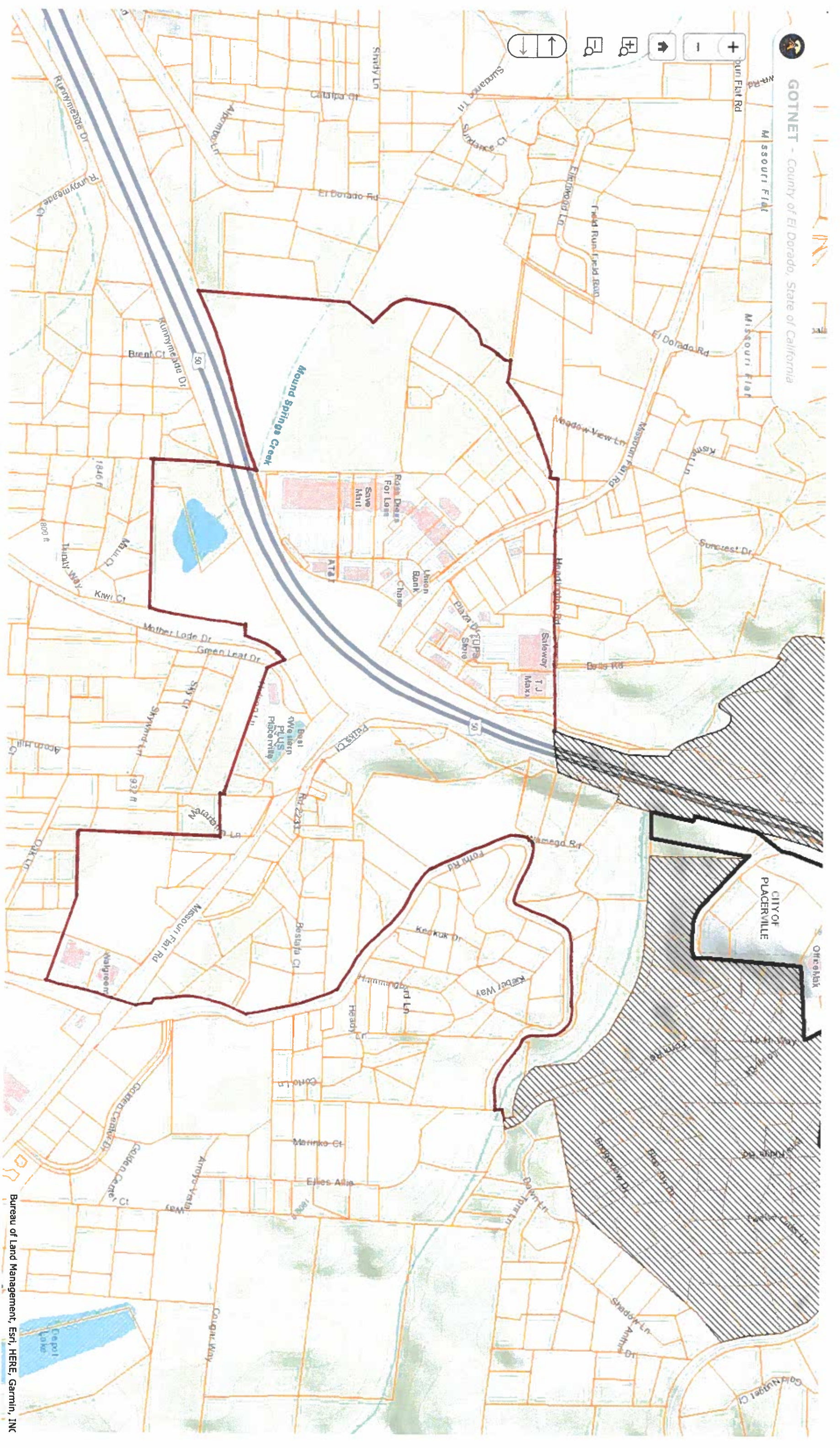


REVISED DRAFT SMITH FLAT AREA SOI EXPANSION APRIL 27, 2023

120°44'58"W 38°44'36"N
0 300 600ft



GOTNET - County of El Dorado, State of California



120°49'49"W 39°42'45"N



DRAFT MISSOURI FLAT ROAD SOI EXPANSION

MARCH 30, 2023

Bureau of Land Management, Esri, HERE, Garmin, INC

